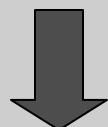


# THE PLACER

## A Voice of History

Sep. – Oct. 2009  
Volume 12, Issue 5

### In this Issue



1. Administrator's Notes
2. WPA Recreation
3. WPA Recreation
4. Museums Intelligence
5. PCHS News
6. Historical Organizations/
7. Calendar of Events

Melanie Barton, Museums Admin.  
Placer County Museums Division  
101 Maple St.  
Auburn, CA 95603  
(530) 889-6500  
[mbarton@placer.ca.gov](mailto:mbarton@placer.ca.gov)

Michael Otten, President  
Placer County Historical Society  
PO Box 5643  
Auburn, CA 95604  
[www.placercountyhistoricalsociety.org](http://www.placercountyhistoricalsociety.org)

Editor and Staff Writer:  
Ralph Gibson  
(530) 889-6502  
[rgibson@placer.ca.gov](mailto:rgibson@placer.ca.gov)  
[www.placer.ca.gov/museum](http://www.placer.ca.gov/museum)

### Administrator's Notes

*Melanie Barton*

If you could determine the success of an event based on smiling faces and enthusiastic participants, then this year's Heritage Trail was over the top! At the evaluation meeting for the 2009 Heritage Trail all present agreed that the event was a resounding success. In a round table discussion, representatives from the 18 museums shared their favorite "WOW Factor" for the event. These comments included increased numbers of visitors, successful bus tours and great tour guides, positive feedback from visitors, fun and varied activities at each museum, overall festive atmosphere, great publicity, distance traveled by visitors, and the number of museums visited.

All museums reported that they had more visitors than in the inaugural year and some museums doubled their attendance. For example in Auburn the Placer County Museum had 405 visitors on Saturday and 306 on Sunday. In 2008, there were 164 on Saturday and 202 on Sunday. At the Bernhard Museum there was a similar increase from 150 to 266 on Saturday and 130 to 242 on Sunday.

The Maidu Interpretive Center reported that attendance this year increased from 129 to 157 on Saturday and from 20 to 185 on Sunday. Similarly, at the Roseville Historical Society Carnegie Museum the attendance increased from 76 to 87 on Saturday and from 31 to 86 on Sunday. Our newest museum partners, the Roseville Telephone Museum and the Fruitvale School, both were pleasantly surprised with the number of visitors. The increases at the foothill museums were also significant. At the Forest Hill Divide Museum on Saturday the attendance went from 55 to 116 in 2009 and on Sunday from 25 to 30. At Dutch Flat the attendance on Saturday went from 25 to 123 in 2009.

This year there were 471 Get Up & Go cards turned in compared to 256 last year. That means that every person turning in a card visited four museums! One of our goals for this event was to encourage visitors to explore multiple museums to get a taste of the varied history of Placer County. We had one couple who visited 13 museums in the two days and a family from Burlingame who made The Heritage Trail a weekend excursion. We heard from several extended families that used the event as an occasion to get together. And best of all,

many visitors expressed a strong desire to attend the event again next year!

All the members of the planning committee praised their volunteers for their efforts to make the two day event successful. It took hundreds of willing hands to pull this large scale event together and our thanks are extended to everyone who gave a helping hand.

This year The Heritage Trail was sponsored by the County of Placer, Capital Public Radio and SureWest. It is because of their support that this event attracted a larger audience and that we were able to put on an event of this size. THANK YOU!

After much discussion, all involved unanimously decided to begin planning the 3<sup>rd</sup> annual Heritage Trail. The tentative date is August 7<sup>th</sup> & 8<sup>th</sup>, 2010. We hope you mark your calendar now and plan to volunteer or be a Trail Traveler.

### ***History in the News***

It's not every day that we have the opportunity to give input in matters that affect the history of our community. Currently there are two projects in Auburn that I encourage you to learn about and to express your opinion to the appropriate committee members or government entities. The first is the Streetscape project planned by the City of Auburn. Along with important infrastructure, this project will celebrate significant historical events and people of the area.

The second one is the Baltimore Ravine Specific Plan. This is a proposed housing development southwest of Auburn off Auburn-Folsom Road. A bridge over Bloomer's Cut, a significant cultural site, is planned as the primary entrance/exit to the development. The Draft EIR is expected this fall and we will be most interested in how the Cultural and Paleontological Resources are addressed.

To learn more about both of the projects, you can go the City of Auburn website.♠

---

---

### **New Deal Sports and Recreation**

*Ralph Gibson*

The Works Progress Administration (WPA) built more than theatres, army barracks, and stone walls. President Roosevelt wanted people to benefit directly from WPA projects, thus swimming pools, tennis courts, parks, and golf courses were built. Even during the Great Depression, sports and recreation were still thought an important aspect of life. Parks weren't being closed; new ones were being built and managed.

The WPA built hundreds of golf courses around the country. Thousands of people in the construction business got jobs building golf courses under the program. When a golf course was completed, more

jobs were created as pro shop personnel, general maintenance workers, greens keepers, and caddies were needed. Bethpage Black Golf Course on Long Island, New York, which hosted the U.S. Open this year, was built by the WPA. Because of this, the tournament was referred to as the "People's Open". There are WPA golf courses throughout California, including the Northwoods Golf Club in Sonoma County and the Ukiah Municipal Golf Course in Mendocino County. The nearest WPA golf course to Placer County is the Washoe Country Club in Reno, Nevada.

By far, the greatest impact the WPA had on sports and recreation was in the sport of tennis. Over 3,000 public tennis courts were built by the WPA. Through this program, hundreds of thousands of people were introduced to the sport. The free facilities provided an escape for those who took up the game and even for those who came to watch matches.

One of the 3,000 public tennis courts is in Placer County. The tennis court at Dutch Flat was built by the WPA in 1939. The tennis court remains to this day and is still in use.

The WPA also created the Recreation Project, which trained and employed recreation leaders for public parks, playgrounds, and

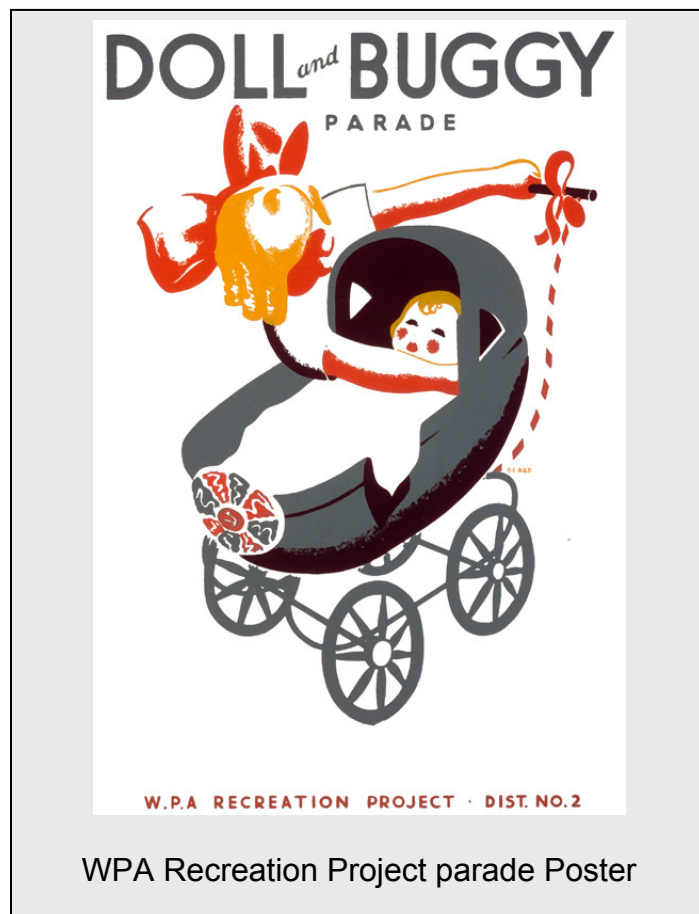
community centers. These leaders organized and taught recreational activities for both adults and children. Like most New Deal programs, posters were created by WPA artists to advertise specific activities.

From crafts, folk dancing and quilt making to baseball and track meets, the Recreation Project became a very popular program for families in the New Deal era.

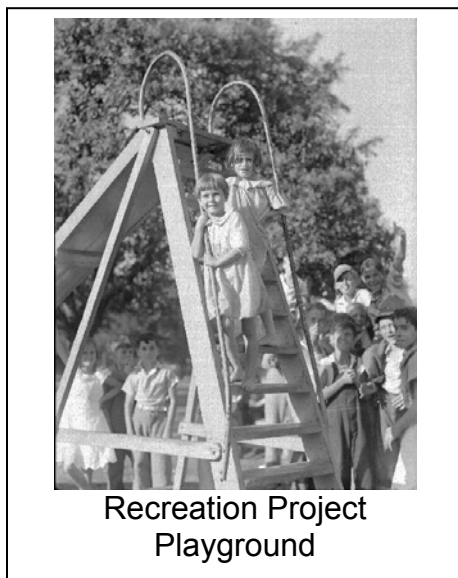
Many sports and recreation facilities built by the WPA still exist. From the Dutch Flat tennis court to the Bethpage Black Golf Course in Long Island, President Roosevelt's New Deal to the American people included a healthy form of escape. A good swim, a few sets of tennis, a round of golf, or a lesson in folk dancing provided a necessary distraction from the economic woes of the time. ♦



Pet Show WPA Recreation Project Poster



WPA Recreation Project parade Poster



Recreation Project  
Playground



## Museums Intelligence

---

---

### Placer County Museums News

*Ralph Gibson*

We've had a busy summer! In the old days we used to catch our breath after spring Living History, but this year we completed a lot of projects once the last yellow school bus of the season pulled away from the Bernhard Museum. We hosted three Community Education Programs; we installed an exhibit in the Bernhard Winery titled: *Relaxation and Rejuvenation: Camping in Placer County*; The Heritage Trail was the second weekend in August; and we recruited over 20 new volunteers and have already begun this year's training classes.

Now we are preparing for fall Living History, we're working on a redesign of one of the Pate Cases in the historic Courthouse foyer and volunteer training will continue through October. Whew!

Our blog continues to draw traffic from both local residents and people from around the world. We've added new pages and a few YouTube videos. Content is updated regularly. If you haven't been to our blog yet,

please check it out at: <http://www.placercountymuseums.blogspot.com/>.

### Community Education Program: Pleistocene Fossils of Hawver Cave

What animals sipped water from the American River 10,000 years ago? What predators lurked in the predawn hours near Auburn Ravine, waiting for prey to wander out? Fossils of extinct animals that once lived in this region of California were discovered by Dr. Hawver in a cave near Cool, California just after the turn of the 20<sup>th</sup> century. If you would like to see examples of some of these fossils and to learn more about the Pleistocene life they represent, please come to the Placer County Museum on Friday, September 18<sup>th</sup> at 7:00 pm. Gene Lorance, who has done extensive research in the Hawver Cave, will present a slideshow on the Hawver Cave and the fossils found inside. Space is limited, so reservations are required.

Please call 530-889-6500 to make your reservation or for more information.

### Community Education Program: *Fire on the Divide, an Archaeologist's Perspective*

Forest fires sweep through numerous regions of

California each year. Once the embers have died and the smoke fades away, Forest Service archaeologists are sent in to conduct surveys to record new prehistoric and historic sites, and to assess damage to previously recorded sites. Please join us on Saturday, October 17<sup>th</sup> at 1:00 pm in the Bernhard Museum Winery for *Fire on the Divide, an Archaeologist's Perspective* presented by U.S. Forest Service archaeologist Nolan Smith. He will give a PowerPoint presentation of archaeological surveys he has conducted after fires swept through the Foresthill Divide region of the Tahoe National Forest and will share equipment used during the surveys and examples of artifacts pulled from the ashes.

For more information, please call 530-889-6500.

---

---

### Placer County Historical Society News



#### President's Message

*Michael Otten,  
President*

As many of you know the City of Auburn is involved in a nine-phase Streetscape project aimed at transforming the section of Lincoln Way eastward from the historic County Courthouse at Auburn-Folsom and Maple Street to Elm Avenue, a

distance of six tenths of a mile on the odometer.

Most of us were under the impression that Phase One of the project, which broke ground on July 15<sup>th</sup>, was aimed primarily at upgrading infrastructure—underground utilities, lighting, streets and sidewalks, new landscaping, seating areas, etc.

It wasn't until an Auburn Journal article, published on August 10<sup>th</sup>, that most of us learned that Phase One of the project involved the creation of an Auburn Endurance Capital Plaza in the area known for more than a century as Central Square. The city announced that within 90-days a historical committee would be formed to work on the other phases and a "walk of fame".

I want to share with you the opinion piece I wrote for the Journal, picking the theme from the city's website:

Let us "Think Auburn First." Let's turn a lose-lose situation in Phase 1 of the Streetscape Project for both Auburn and the endurance community into a win-win, from a divisive issue to a unifying one.

We are just learning now that part of the plan to realign this High Street-Lincoln Way intersection is to create the "Auburn Endurance Capital Plaza" to honor the winners of the Tevis Cup 100 mile Endurance Ride and Western States Endurance Run in a mega way.

Let's allow the infrastructure aspects of Streetscape to proceed but pause and really

think what we want this city core to really look like.

For more than a century, over twice as long as these 100-mile events have been around, this area has been known as Central Square. In the growing Auburn of the late 1880s this was the central point between Old Town and the East Auburn Rail Station. Central Square is more than a name; it is the idea of uniting us.

Let's applaud the Auburn Journal for sparking us into giving some real thought to what we are about with this part of Lincoln Way, so renamed after being part of the first transcontinental highway of 1913.

Let's too applaud the City Council to decide to put this decorative aspect of Central Square on hold to obtain more input, to learn what is going on and to achieve some unanimity. Sometimes the "devil is in the details." It has been hard to find out what those details might be. The situation reminds me of the line uttered by Strother Martin and Paul Newman in the 1967 movie *Cool Hand Luke*: "What we have here is a failure to communicate."

Councilman Bill Kirby attended the City Capital Endurance Committee last week, getting his first peek at the plaza design. He was dumbfounded and declared it "excessive."

City Manager Robert Richardson, said the first phase of the plaza calls for 25 2-by-2 foot markers (100 square feet of black granite pavers from Ruhkala Granite and Marble in Rocklin honoring the folks and events the committee came up with.) Eventually this would be

expanded to 85 (340 square feet). And this is just the flat part.

Central Square should be a place where many aspects of our community should be recognized, including the endurance events, such as a plaque honoring Wendell Robie and brief descriptions of the 100-mile events. If we are going to go all out as is being proposed here, let's put it at a mini Endurance Park in the American River Overlook area near the finish lines of these two great races. It is also near the junction of the Western States and Pioneer Express Trails. Let's do like we did with relocating the Boys and Girls Club (remember early suggestions would have placed it in the flight path zone of Auburn Airport) and the Dog Park and do something better.

Let's Think Auburn first so we can all win.

\*\*\*

I submitted the following article for the Colfax Record on the grand reopening of the Gold Run Rest Stops, a half hour or so east of Auburn. I especially thank past president George Lay for his six years of work on the project as well as Doug Ferrier, president of the Dutch Flat Historical Society, who supplied the photos for the tile work.

### Historical Society Joins in Opening of Rest Stop

GOLD RUN--Looking more like the Monte Vista Inn two miles away at the Dutch Flat I-80 exit than your typical public restrooms, the highway safety

rest stops near here were formally reopened July 22.

Jody Jones, district director for the state Department of Transportation (Caltrans), said the \$3.4 million modernization project, was just part of a \$520 million overhaul of the all-weather highway that was opened just in time for the 1960 Winter Olympics.

Jones thanked nearby businesses the Placer County Historical Society for its input in providing information about the rich gold and transportation history. George Lay, past president of the society, thanked Caltrans for the opportunity to put specially etched tiles in the restrooms honoring Theodore Judah, hydraulic mining and the Chinese who worked on the Central Pacific Railroad nearby.

The Society also participated in new historic markers recognizing the Chinese Railroad workers and the hydraulic mining that shaped the reddish cliffs along the highway corridor and once threaten to erode the nearby transcontinental railroad line.

"Restrooms have come a long ways since the early days," said Ken Grehm, Placer County public works director. He said the rest stops not only serves the interstate traffic but that I-80 "is the road we take to get around our own county." Officials said contracts are expected to be awarded soon to modernize the I-80 rest stops at Donner Summit.

Caltrans officials handed out orange bags of free samples at both the east and west bound rest stops in honor of the occasion and to provide information about the construction work between Colfax and the Nevada State line and the "Slow for the Cone Zone" safety awareness campaign.

Michael Otten, president of the PCHS, said between 1865 and 1878, more than \$6 million in gold from hydraulic mining went through the local assay office and was used in the nation's recovery after the Civil War. He said that would be worth more than \$300 million in today's economy. Several members of the Colfax Historical Society attended the ceremony.

Gold Run, originally called Mountain Springs, was founded in 1862, by Orrin W. Hollenbeck, who erected a hotel there and was its postmaster. He later served as Placer County Treasurer. Part of the first transcontinental highway, the Lincoln Highway, which opened in 1913, still exist between Gold Run and Dutch Flat.



George Lay and Helen Wayland at Gold Run Rest Stop Reopening

## Attendance at the Benton Welty Historical Classroom Up

The rarely-opened Benton Welty Historical Classroom was a big hit with visitors who participated in the second annual Heritage Trail museum tour Aug. 8-9. Two visitors commented to me that they thought it was a better historical representation of what school was like in the old days than what Sacramento has to offer.



Attendance was up from 137 in 2008 to 159 this year. One visitor was happy to see her father in a 1923 class photo. Special thanks go to the volunteers who staffed the museum: Glyneth Cassidy, Anne Holmes, Jane Misphey, Delana Ruud, Doris Viera, Karri and Betty Samson, Jean Allender, Bonnie Parodi, Sue Bostick and Dorothy Overton. Thanks to Jerri and George Lay and Jean Bullock for putting together the unique school basket prize won by Karen L. Hunt of Weimar.

--Michael Otten,  
[otten@ssctv.net](mailto:otten@ssctv.net)

**Placer County Historical Society  
Dinner Meeting**

*Addah Owens, Vice President*

**When:** October 1, 2009

**Time:** 6:30 Dinner, 7:30 Program

**Where:** Veteran's Memorial Hall,  
100 East St., Auburn, CA

**\*Cost:** \$14 per person

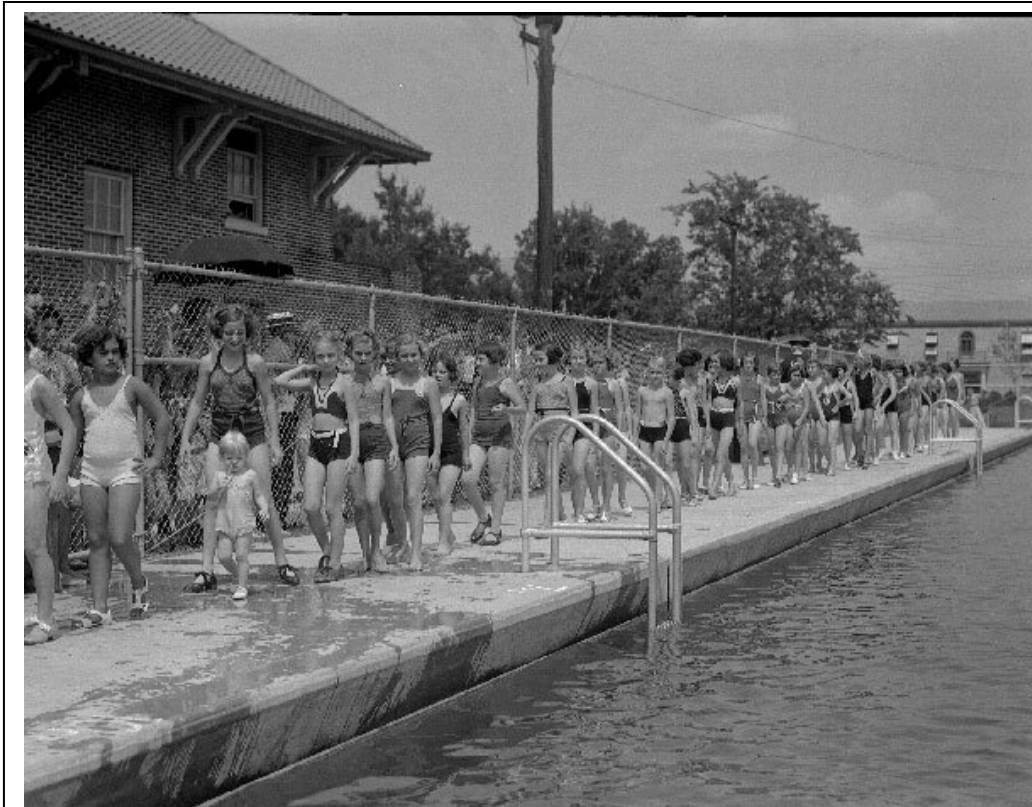
**Menu:** Italian Dinner

**Mail Check to:** PCHS, c/o Betty  
Samson, 8780 Baxter Grade Road,  
Auburn, CA 95603.

**Program:** John Knox and Carol  
Cramer will give a PowerPoint  
presentation: *Where's Deadrick?*  
The presentation will include the  
results of their extensive research  
into the Bernhard family tree and  
information about the Bernhard  
property and house. John and  
Carol are both.♥



WPA Recreation Project



WPA Recreation Project

## **Placer County Historical Organizations**

---

---

Colfax Area Historical Society  
Ed & Nilda Duffek  
(530) 305-3209  
[www.colfaxhistory.org](http://www.colfaxhistory.org)

Foresthill Divide Historical Society  
Sandy Simester,  
(530) 367-3535  
[www.foresthillhistory.org](http://www.foresthillhistory.org)

Friends of Griffith Quarry  
Doug Brown, (916) 663-1837

Fruitvale School Hall  
Community Association  
Lyndell Grey,  
(916) 645-3517

Golden Drift Historical Society  
Jim Ricker, (530) 389-8344

Historical Advisory Board  
Tracy Falk, (530) 889-6500

Joss House Museum and  
Chinese History Center  
Richard Yue (530) 346-7121

Lincoln Archives Museum  
Shirley Russell, (916) 645-3470

Lincoln Highway Association  
Norman Root, (916) 483-8669  
[www.lincolnhwy.org](http://www.lincolnhwy.org)

Loomis Basin Historical Society  
Dot Shiro, (916) 663-3892  
[www.ppgn.com](http://www.ppgn.com)

Newcastle Portuguese Hall  
Association  
Aileen Gage, (530) 885-9113

Old Town Auburn Preservation Society  
Donna Howell, (530) 885-2891

Placer County Genealogical Society  
Alice Bothello, (530) 885-2216  
[www.pcgenes.com](http://www.pcgenes.com)

Placer County Historical Society  
Michael Otten, (530) 888-7837  
[www.placercountyhistoricalsociety.org](http://www.placercountyhistoricalsociety.org)

Placer County Museums Docent Guild  
Sandi Tribe, (530) 887-9143

Rocklin Historical Society  
Barbara Chapman,  
(916) 415-0153  
[www.rocklinhistory.org](http://www.rocklinhistory.org)

Roseville Historical Society  
Michael Bryant, (916) 773-1520  
[www.rosevillehistorical.org](http://www.rosevillehistorical.org)



WPA Recreation Project Poster



WPA Recreation Project Poster



## Calendar of Events

### September

- Sept. 16<sup>th</sup>, 6:30 pm** Loomis Basin Historical Society meeting at the Loomis Library. Contact 916-652-7844.
- Sept. 18<sup>th</sup>, 7:00 pm** Community Education Program: *The Pleistocene Fossils of Hawver Cave* at the Placer County Museum. Reservations required. Contact: 530-889-6500.
- Sept. 21<sup>st</sup>, 6:00 pm** Foresthill Divide Historical Society Business meeting at the Foresthill Divide Museum. Contact (530) 367-3535.
- Sept. 21<sup>st</sup>, 7:00 pm** Rocklin Historical Society meeting at the Rocklin Library. Contact: 916-624-3464.
- Sept. 24<sup>th</sup>, 7:00 pm** Placer County Genealogy Society general meeting in the Beecher Room at the Auburn Library. Contact 530-885-2216.

### October

- Oct. 17<sup>th</sup>, 1:00 pm** Community Education Program: *Fire on the Divide, an Archaeologists Perspective* at the Bernhard Museum Winery. Contact: 530-889-6500.
- Oct. 19<sup>th</sup>, 6:30 pm** Foresthill Divide Historical Society Potluck meeting at the Foresthill Memorial Hall. Contact 530-367-3535.
- Oct. 19<sup>th</sup>, 7:00 pm** Rocklin Historical Society meeting at the Rocklin Library. Contact: 916-624-3464.
- Oct. 21<sup>st</sup>, 6:30 pm** Loomis Basin Historical Society meeting at the Loomis Library. Contact 916-652-7844.
- Oct. 21<sup>st</sup>, 5:30 pm** Historical Advisory Board meeting in the Bernhard Winery. Contact: 530-889-6500.
- Oct. 22<sup>nd</sup>, 7:00 pm** Placer County Genealogy Society general meeting in the Beecher Room at the Auburn Library. Contact 530-885-2216.

**Placer County Museums**  
101 Maple Street  
Auburn, CA 95603

